



## SMARTESD Sustainable Safety™ ESD Solutions



# SMARTESD Sustainable Safety™ ESD Solutions

Electrostatic discharge (ESD) is the sudden flow of electricity between two electrically charged objects caused by contact, an electrical short or dielectric breakdown. A buildup of static electricity can be caused by tribocharging or by electrostatic induction. The ESD occurs when differently-charged objects are brought close together or when the dielectric between them breaks down. LTHD Corporation is here to help you prevent the harmful effects of Electrostatic Discharge. With almost 30 years of experience on the market, LTHD corporation provides full ESD field consultancy, which basically means we can help you find the right solution for your ESD problem helping you save time and resources.

## ESD SERVICES

Relying on a experienced and professional team LTHD Corporation also provides a wide range of ESD services from full equipment assembly to maintenance, equipment service and full installation service for ESD floors, turnstiles, ESD furniture assembly and grounding systems for your EPA area.

## ESD PACKAGING SOLUTIONS

Of course shipping electronic equipment is more challenging than shipping other forms of equipment due to the need for safeguarding the shipment from electric charges. ESD Protective Packaging covers any materials coming into direct contact with ESD sensitive devices during handling, shipping and storage. LTHD Corporation is a company specialising in the design, development and manufacture of custom ESD packaging systems for sensitive electronic equipments.

## EPA AREA

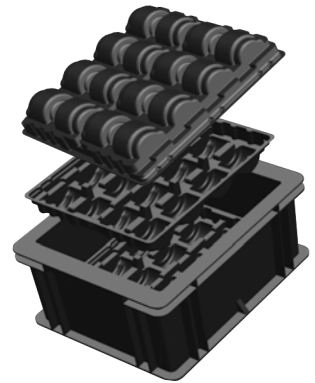
An ESD Protected Area (EPA) is a defined space within which all surfaces, objects, people and ESD Sensitive Devices (ESDs) are kept at the same electrical potential. This is achieved by simply using only 'groundable' materials for covering of surfaces and for the manufacture of containers and tools. All surfaces, products and people are bonded to Ground. Bonding means linking, usually through a resistance of between 1 and 10 megohms. We can provide everything you need for setting up your ESD Protected Area.

## FLOORING SYSTEMS

A Flooring / Footwear system is an alternative for personnel grounding for standing or mobile workers. Here we talk about floor mats for simple ESD working spaces, PVC tiles and epoxi coatings for larger EPA areas and floor marking tapes and floor maintenance products.

## ESD FURNITURE

ESD workbenches are suitable for static controlled areas and have worktops which are grounded for the safe discharge of static electricity. Being customisable in size and shape and coming with a wide range of accessories the workbench is an essential piece of equipment to help limit damage caused to these components during the work process. Of course beside the workbench you will need other pieces of ESD furniture like chairs and trolleys.



## IONIZERS

A bench-top ionizer or overhead ionizer can be selected to neutralise ElectroStatic charges at the workstation. This is the only ESD control method available to neutralise ElectroStatic charges on essential insulators or isolated conductors that may be at the workstation.



## GROUNDING SOLUTION

A bench-top ionizer or overhead ionizer can be selected to neutralise ElectroStatic charges at the workstation. This is the only ESD control method available to neutralise ElectroStatic charges on essential insulators or isolated conductors that may be at the workstation.

## TEST MEASUREMENT EQUIPMENT

LTHD Corporation offer a range of ESD test instruments like test analyzers, electrostatic field meters, resistance test kits, footwear and wrist strap testers, to check wrist straps, cords, footwear, grounding, workbenches, resistivity, resistance and more.



## GARMENTS

Antistatic clothing and gloves are an essential part of many electronic production companies, as well as laboratories, clinical environments, precision engineering environments – and should always be seen as another vital aid in an ESD protective area.

## DRY STORAGE CABINETS

Moisture Sensitive Devices (MSDs), must be managed correctly because "a single mistake" on a tray or reel of MSD causes "negative impact on the entire production batch". Electronic components (like QFP, BGA or SOIC for example), LEDs and Printed Circuit Boards, when extracted from their original protective package, absorb humidity from the environment and during the soldering process the trapped moisture can vaporize and exert internal package stress.



We also provide a wide range of ESD tools, office supplies and ESD signs as follows: ESD brushes, cutting nippers, pliers, shears precision screwdrivers, ring binders, antistatic pens, document holders and trays waste baskets and bags, warning signs.





We provide **Specific** and **Measurable**,  
**Achievable** but **Relevant**, **Time-based**  
industry solutions.

**SMARTID** Ingenious Product™  
ID Solutions

**SMARTEMS** High Performance™  
EMS Solutions

**SMARTESD** Sustainable Safety™  
ESD Solutions

**SMARTMTL** METAL Converting™  
Solutions

**SMARTCHE** High Precision™  
CHEMICAL Solutions

Ardealul 70 • 300153 Timisoara • Romania  
HQ +40 256 202 286 • +40 256 201 273  
HQ +40 729 009 922 • +40 723 636 500  
F +40 724 688 150 • lthd@lthd.com  
[www.lthd.com](http://www.lthd.com)

